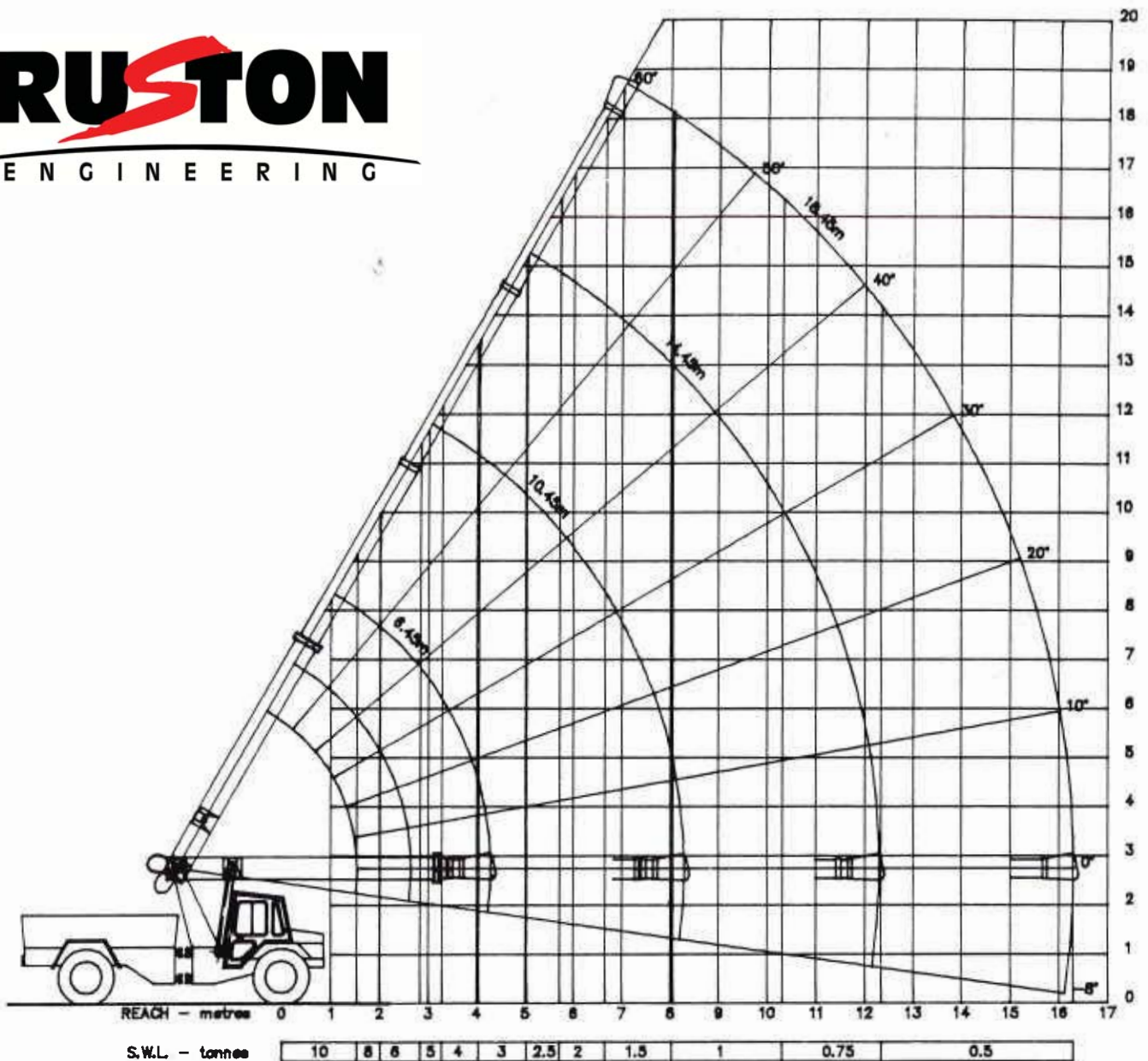


LINMAC AWD

All Wheel Drive

RUSTON

ENGINEERING



GENERAL DIMENSIONS.

Wheel Base 4000mm.
Overall Width 2475mm.
Overall Height 2990mm.
Overall Length 9500mm.
Prime Mover Length 6248mm.
Ground Clearance 390mm.
Mass 13900 kg Approx.
Turning Circle 13200mm.

CRANE PERFORMANCE DATA.

Boom Luffing Angle -8° to $+60^{\circ}$.
Boom Luffing Time 15 seconds.
Boom Extension Time 35 seconds.
Hook Height 17.5m.
Horizontal Reach 16m.
Winch Single Line Bare Drum 2750kg.
Reaved for two falls. Rope compensation on boom two.

PERFORMANCE DATA.

Engine. Cummins 6 BT 5.9 Turbo charged six cylinder. 119 kw @ 2600 Rpm. Eaton nine speed transmission. Spicer Hypoid Axles. Front Wheel Drive Standard. Four Wheel Drive on select. Brakes. 420mm x 180mm 'S' cam, fully air operated with spring brake parking. Tyres. 10.00 x 20 x 14PR Cross Ply tyres fitted on spoke wheels. Obitrol steering control powered from main hydraulic pump via priority demand valve. Steering angle 40° each side of centre.

OPTIONS AVAILABLE.

Choice of Engines, Choice of Transmissions, Airconditioning, Dual Wheels. 11.00 x 20 x 14PR. Super Singles 18.5 x 22.5 low profile radial.

LINMAC AWD

All Wheel Drive

80 kph – Front Wheel Drive, 10 tonne lift & carry crane

Cut travelling time and operate in comfort with this sure footed, high capacity crane. Features front wheel drive with AWD on select, fully sprung suspension enabling 80kph + road speeds.

Four part full powered boom provides up to 17.5 metres hook height and 16 metres forward reach, with the model 3,000 winch reaved for two falls.

Other features include: Axle lockouts, auxiliary battery powered steering system and rope compensation on boom two.

Options available: Choice of engines, choice of transmissions, fully integrated air conditioning system. Choice of tyres. Choice of winches.



 **LINMAC**

RUSTON

ENGINEERING

* Crane illustrated is fitted with optional Model 4000 winch, super single tyres and bumper mounted protection bars.